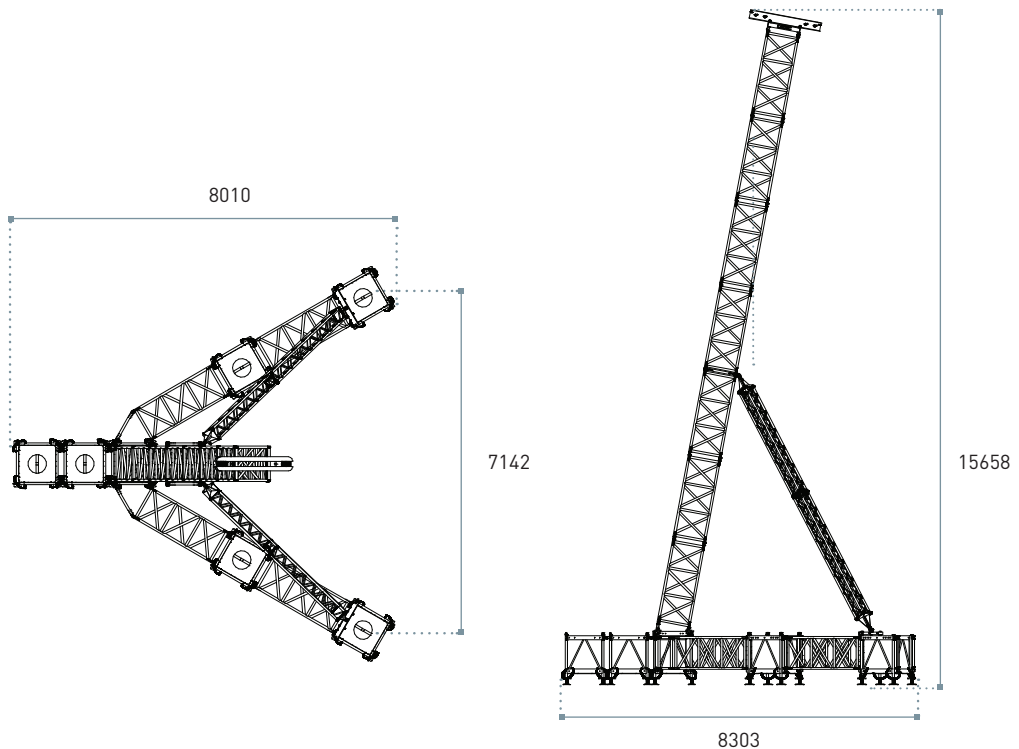




## FLYINTOWER 15-2,000

Support Tower for audio systems. Designed in QL76A, this new Flyintower is suitable for 2,000 kg loads and can reach the height of 15 meters, thus ensuring sturdiness and rigidity on relevant heights. It also utilizes QH30SA trusses as stabilizing elements and is equipped with fork connections.

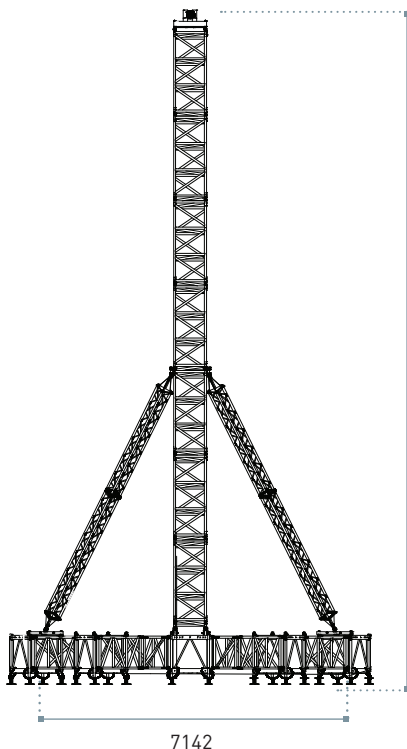
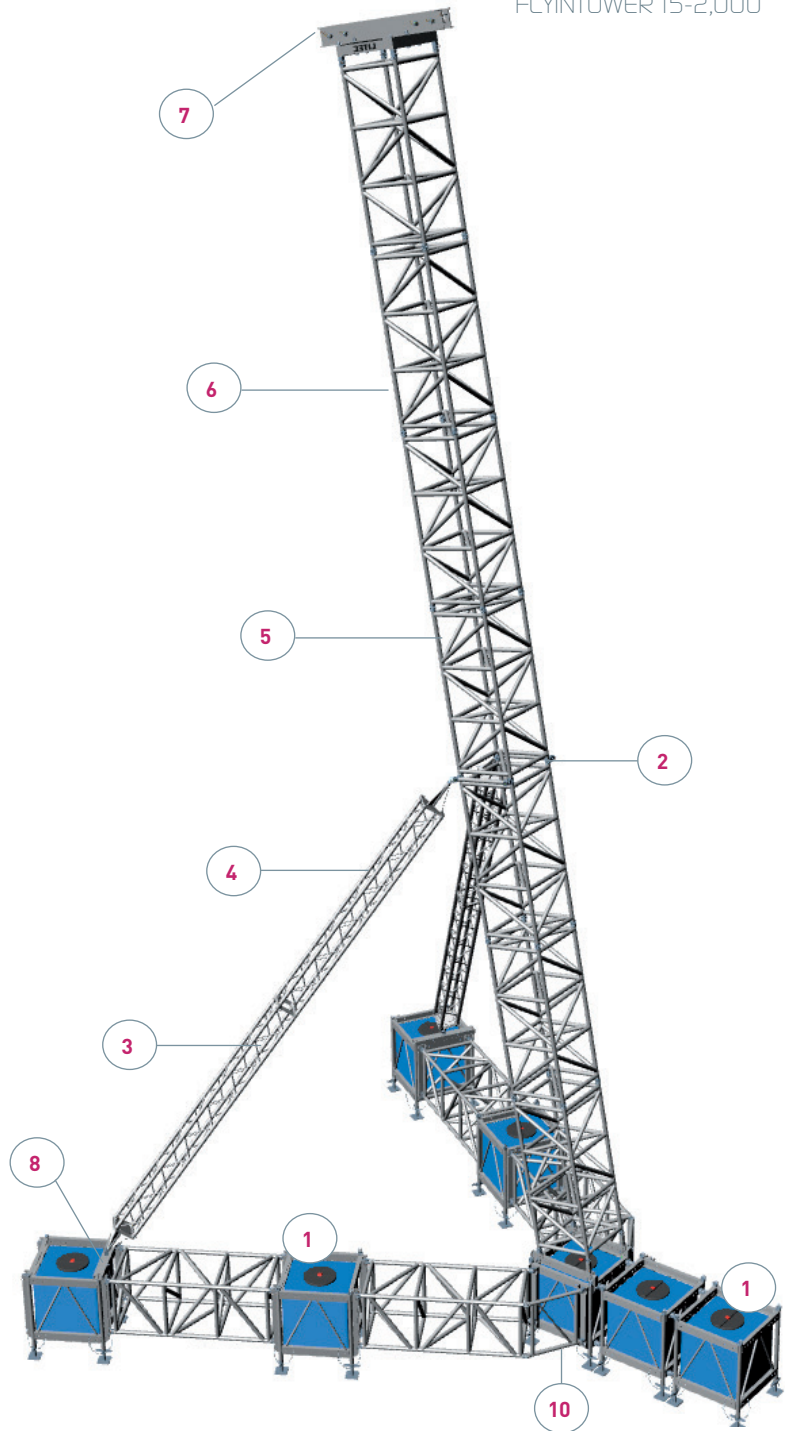
Maximum tower height	15 m
Vertical main truss	QL76A
Base dimensions	830 x 801 cm
Maximum lifting load capacity	2,000 kg





**FLYINTOWER 15-2,000**  
**COMPONENTS**

1	Water Ballasts
2	RAC0001
3	QH30SA350
4	QH30SA300
5	QL76200AB
6	QL76200A
7	MTT76F
8	KHLF
9	KHLB
10	FL76071M2P



15658

7142

**FLYINTOWER 15-2,000**

In the concept of the new Flyintower are also included water ballasts, already integrated in the system. They consist of aluminium

cages and plastic tanks to be filled with water. The new Flyintower allows you to use your own stock of QL76A trusses.