

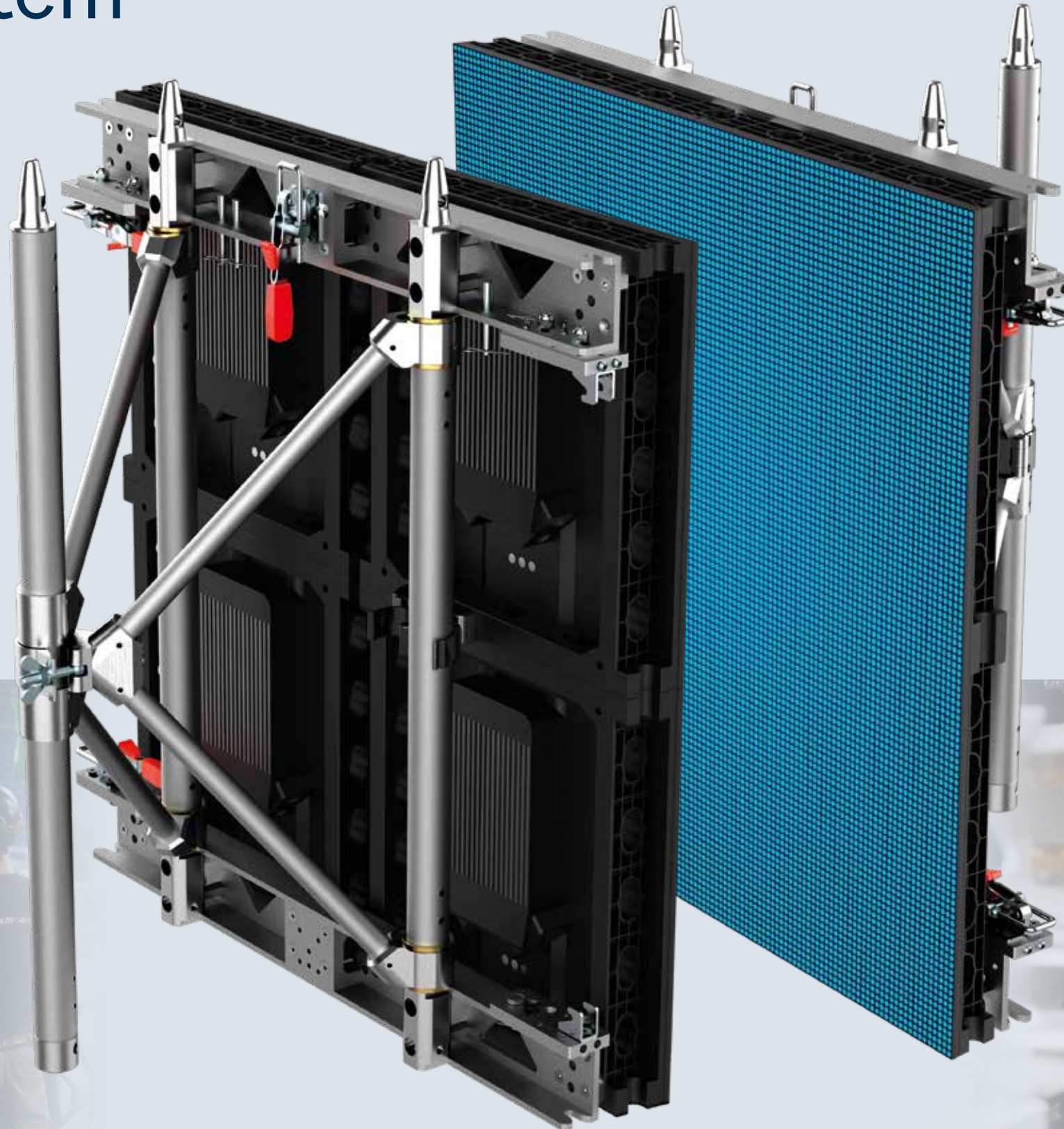


Backbone Frame Outdoor System

LED walls, at the center of the scene.

From rock bands to pop stars, from television & film studios to corporate conventions, LED walls have become an indispensable presence for event creators.

The high performance achieved by this technology makes it possible to construct large screens surfaces composed of multiple LED panels.



Backbone, beyond the scenes.

LITEC Backbone, the solution for building large LED wall screens quickly and securely.

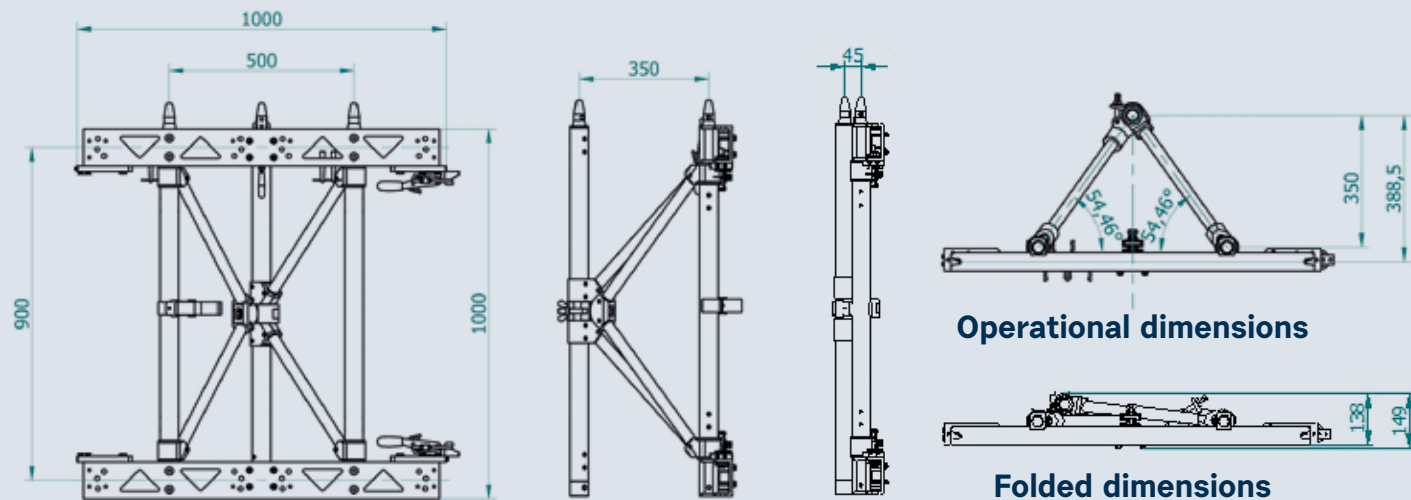


The aluminium reinforcement frame allows for creation of a modular, robust structure that is easy to assemble, disassemble, and move.



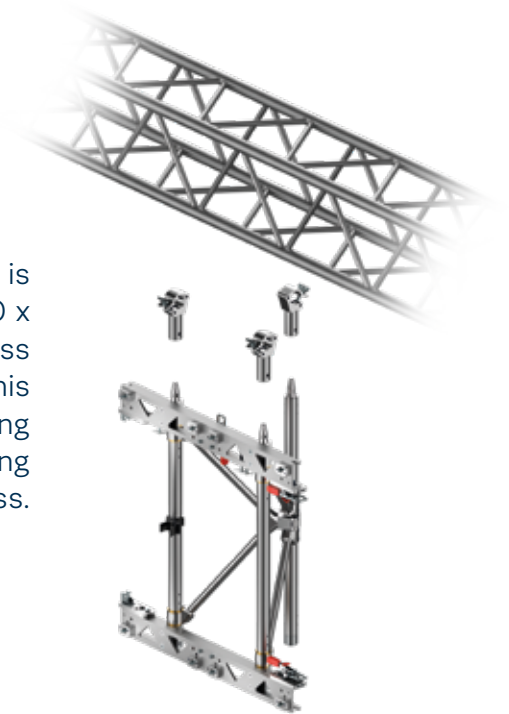


Each frame is made of a sturdy aluminium structure weighing **27.0kg**. A hinge system allows for a transition from the folded transport configuration to the operational position. The coupling between frames is extremely precise, with a tolerance of **0.15mm** for perfect alignment of the LED panels.



Backbone Frame Outdoor System

The Backbone Frame Outdoor system is designed to be hung from a dedicated 40 x 40 heavy-duty anti-torsion aluminum truss specifically “engineered and designed” for this application using special accessories consisting of aluminium clamps to allow easy coupling between the Backbone frames and the truss.



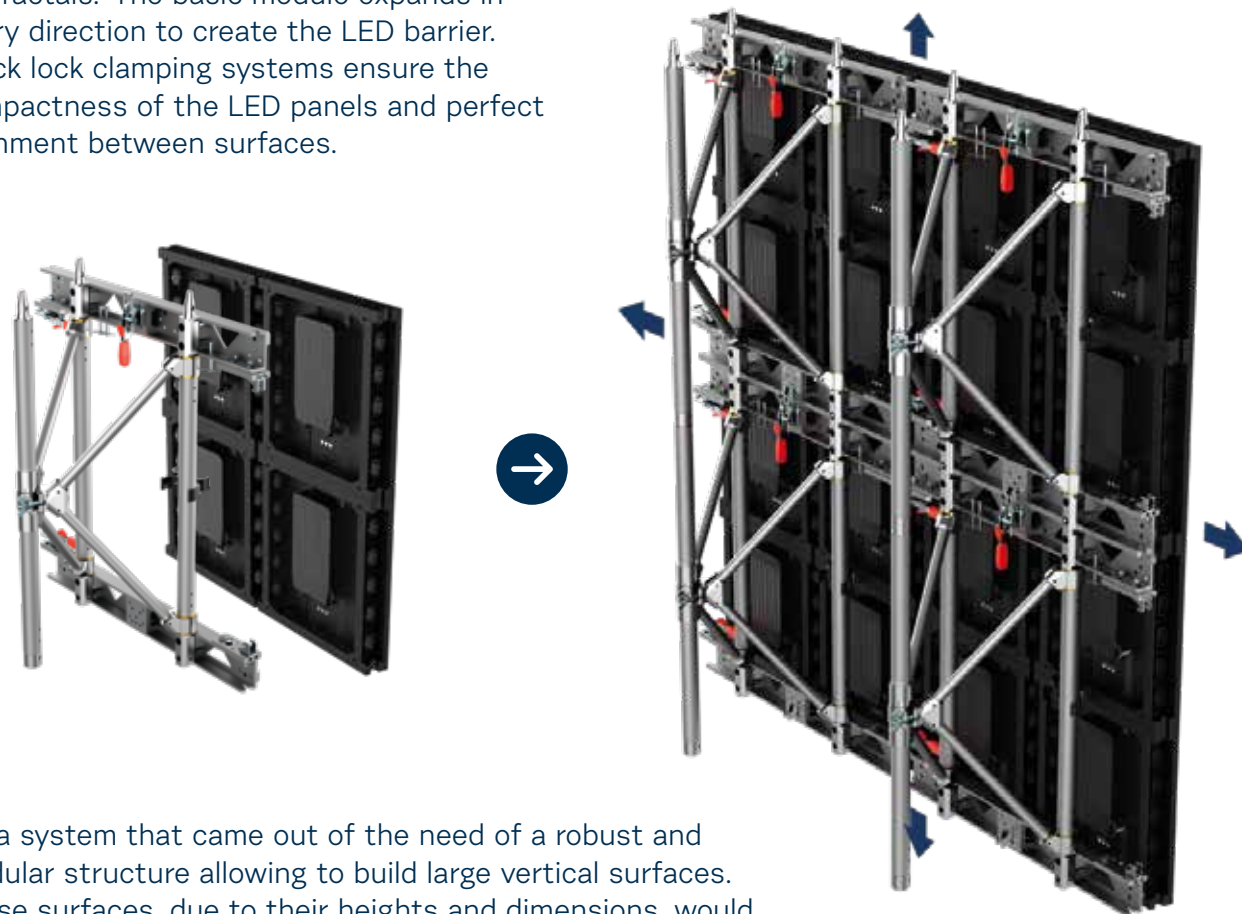
Once the first line of frames is aligned on the ground, lift the truss and add the next line of frames. They are secured together with conical spigots and pins, following the ‘fix and lift’ concept.



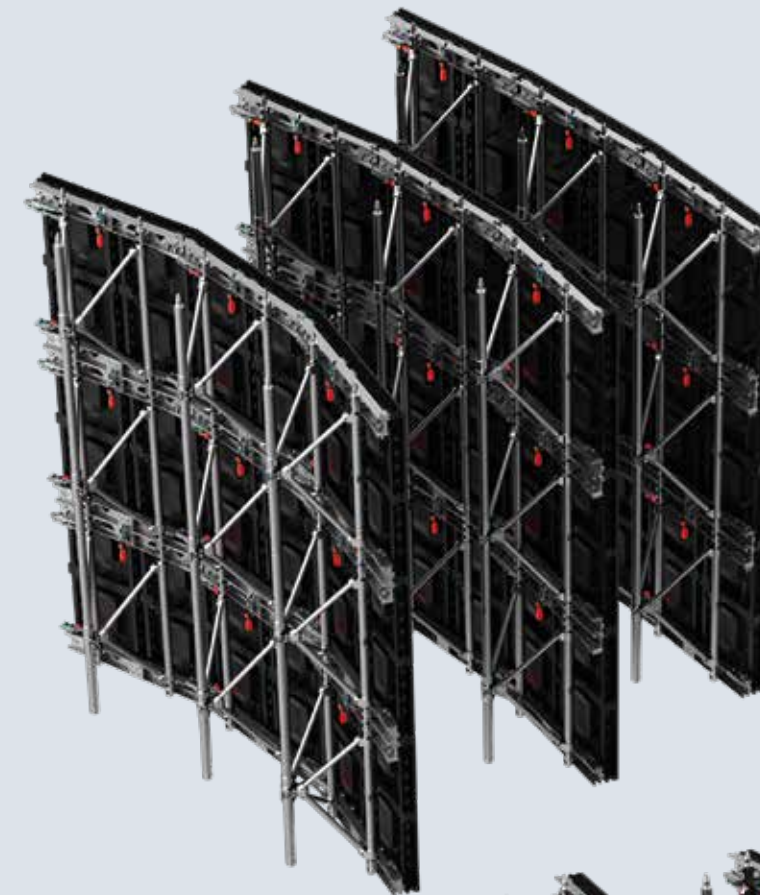


As simple as a fractal

The modularity is derived from the concept of 'fractals.' The basic module expands in every direction to create the LED barrier. Quick lock clamping systems ensure the compactness of the LED panels and perfect alignment between surfaces.

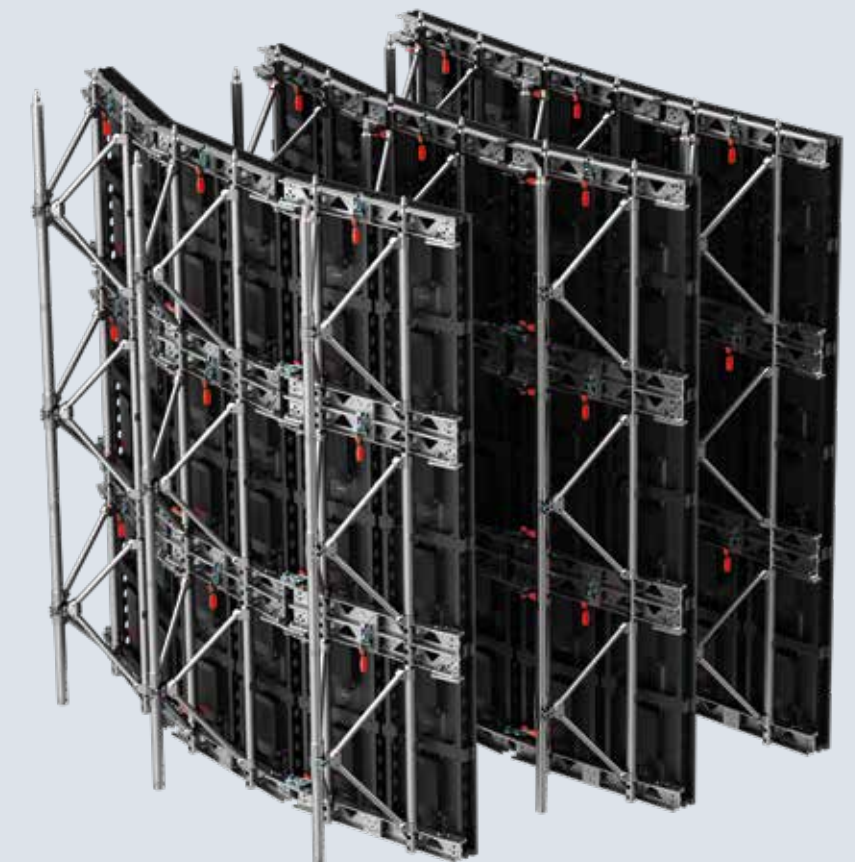


It's a system that came out of the need of a robust and modular structure allowing to build large vertical surfaces. These surfaces, due to their heights and dimensions, would otherwise require scaffolding in the backstage area, resulting in significant costs and time. With the Backbone Frame, light designers are now freer to pursue their dreams.



Concave and convex

Concave or convex: The Backbone frames offer adjustable curvatures at angles of 2.5°, 5.0°, and 7.5°, in both positive and negative directions. By tweaking the position of the connecting screws, you can effortlessly create undulating and curved effects.



Designed for live tours



Easily foldable

The pre wiring of 4 LED 50x50cm panels for each Backbone module ensures efficiency and time saving during installation. Each 1x1 metre frame can be compacted to a thickness of 20cm (depending on LED panel used) and can be stored and transported on carts.



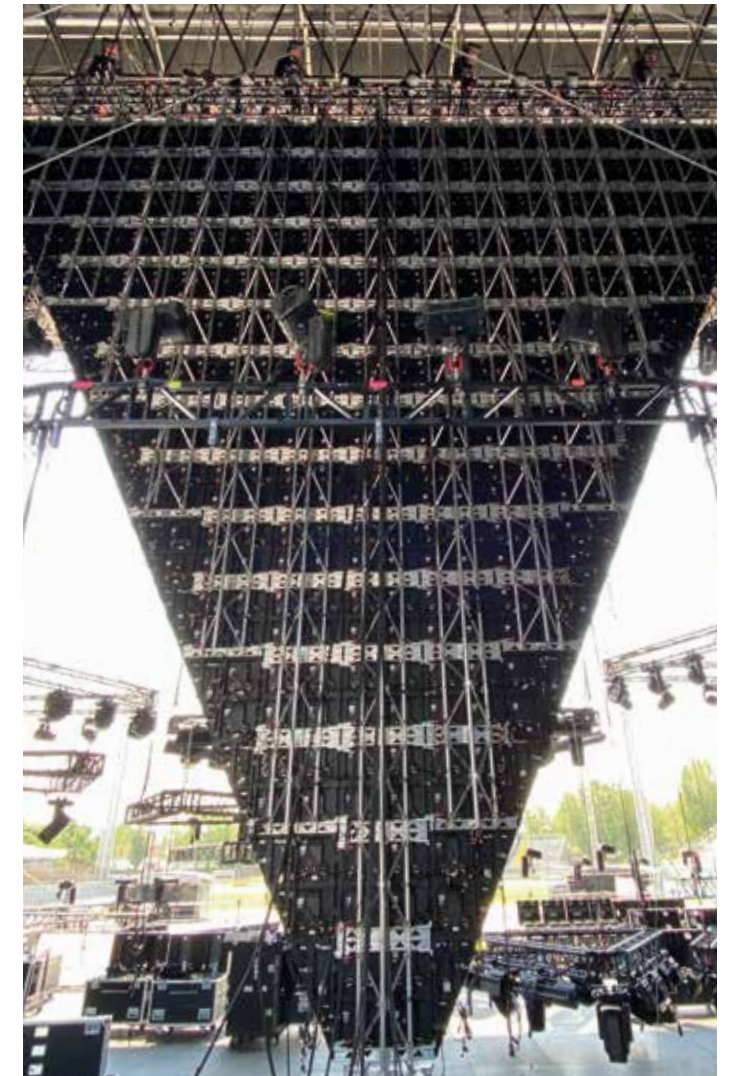
Any shape

Flexibility in use with maximum operational safety.

Virtually, there are no limits in constructing a wall of LED modules. The modularity of the system and its intrinsic robustness make large scale applications possible, with an excellent wind resistance and the freedom to execute formats of any shape.



Scan this QR Code to watch the video





The spirit of innovation that has distinguished LITEC since its inception continues year after year.

Innovating in solutions designed to support tailor made projects for our clients, innovating in creation of entirely new product lines.

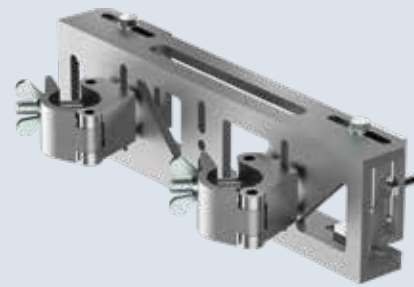
Solutions that arise from the constant collaboration between our technical staff and the most discerning users to create new ambitious products.

LITEC⁴

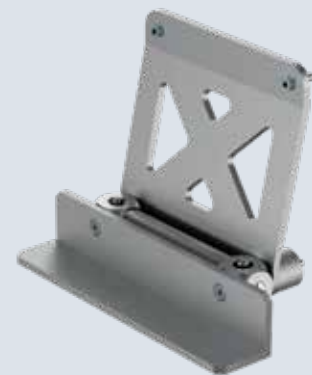
Backbone Frame Indoor System

BACKBONE INDOOR

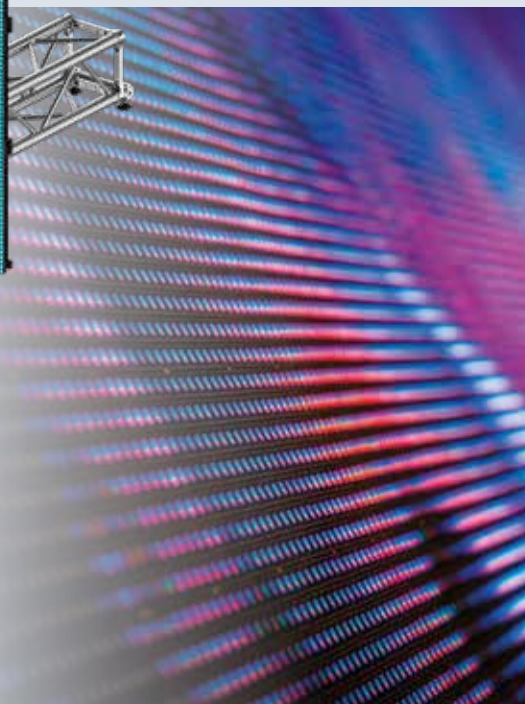
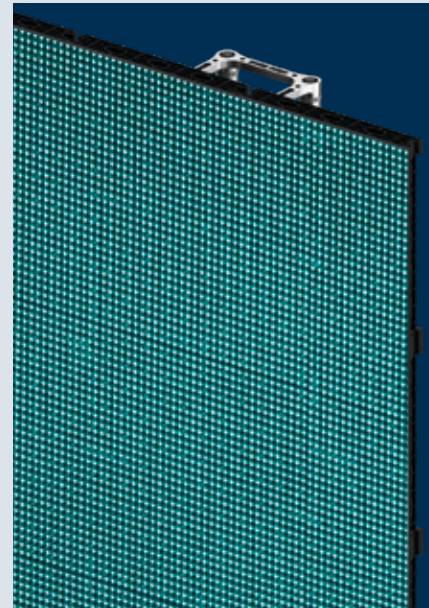
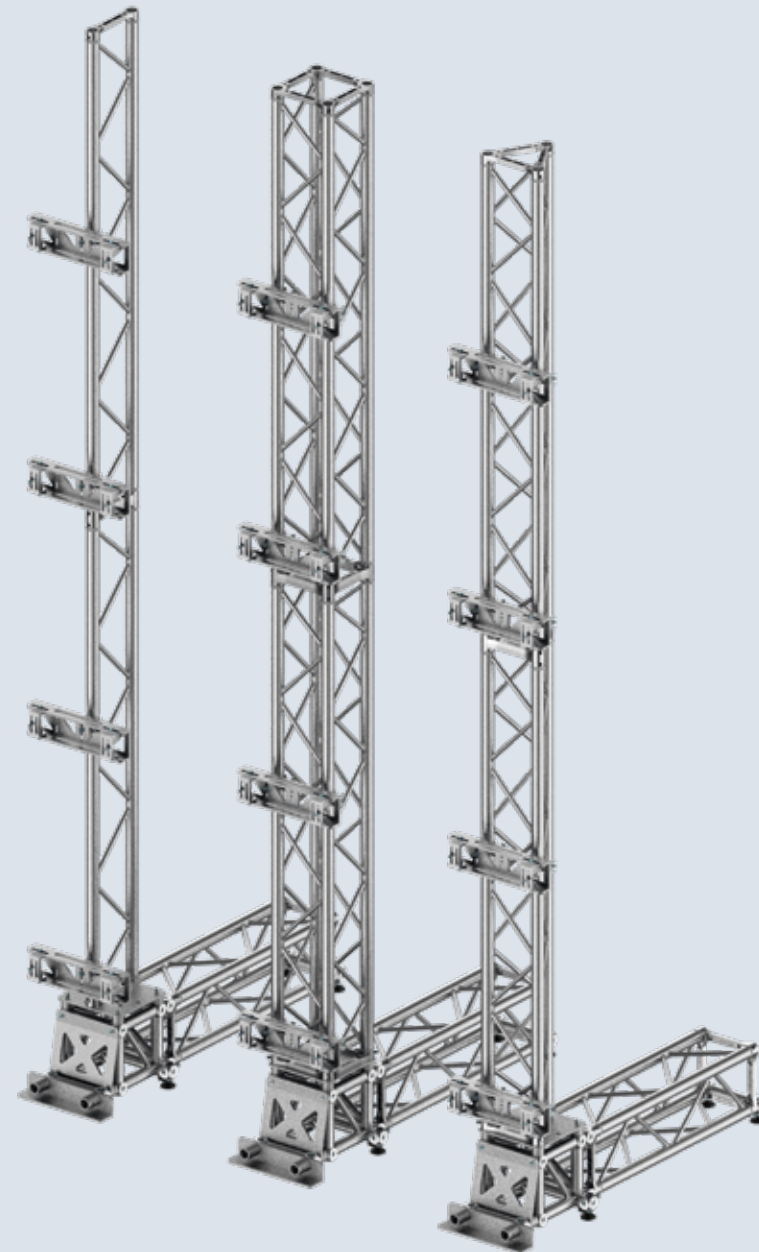
In addition to large outdoor structures, there is always high demand for simple and reliable solutions to set up LED wall inside fair stands, conference halls, shops, and, of course, entertainment events.



The range of standard products in the LITEC Truss catalog is ready to meet these needs. Simply add some interface modules with clamps and a support base between truss and LED panels. The heights allowed by these solutions vary depending on the trusses used and the type of LED panels.

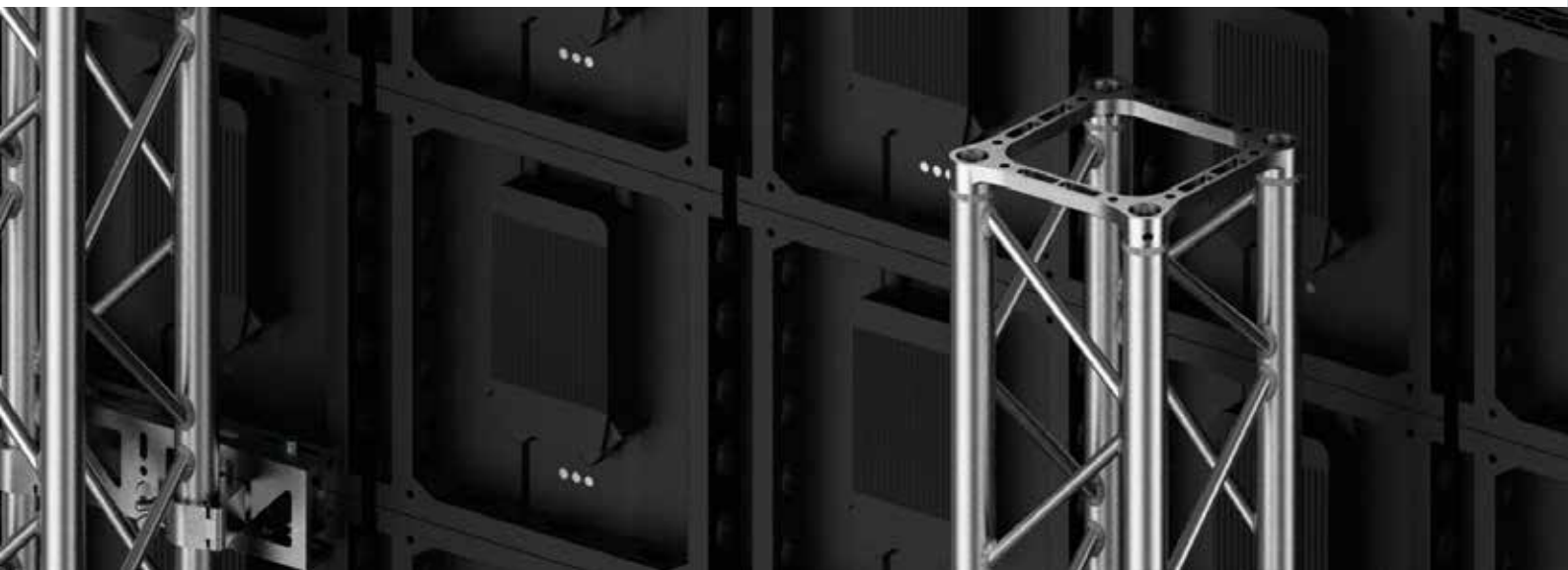
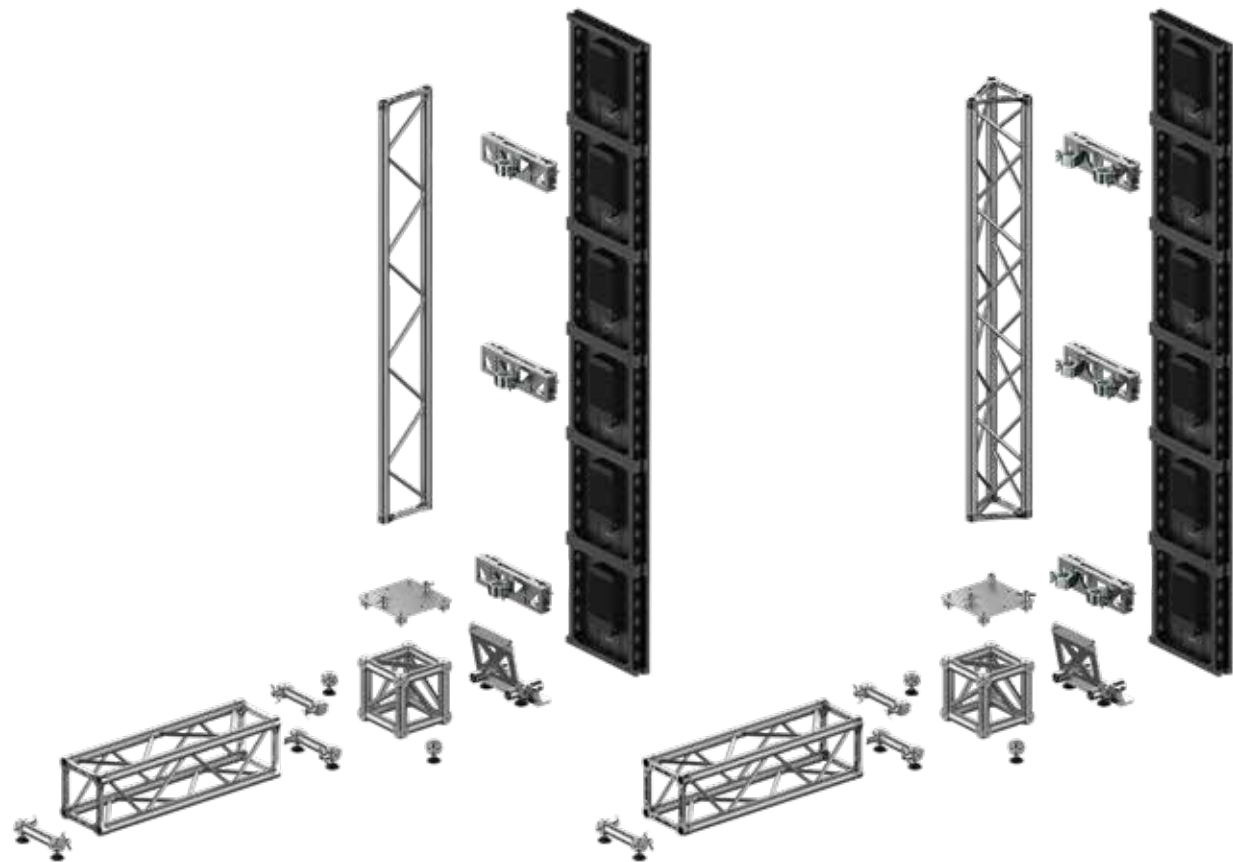


Our technical staff is available to create the most suitable configuration based on the needs of each project.



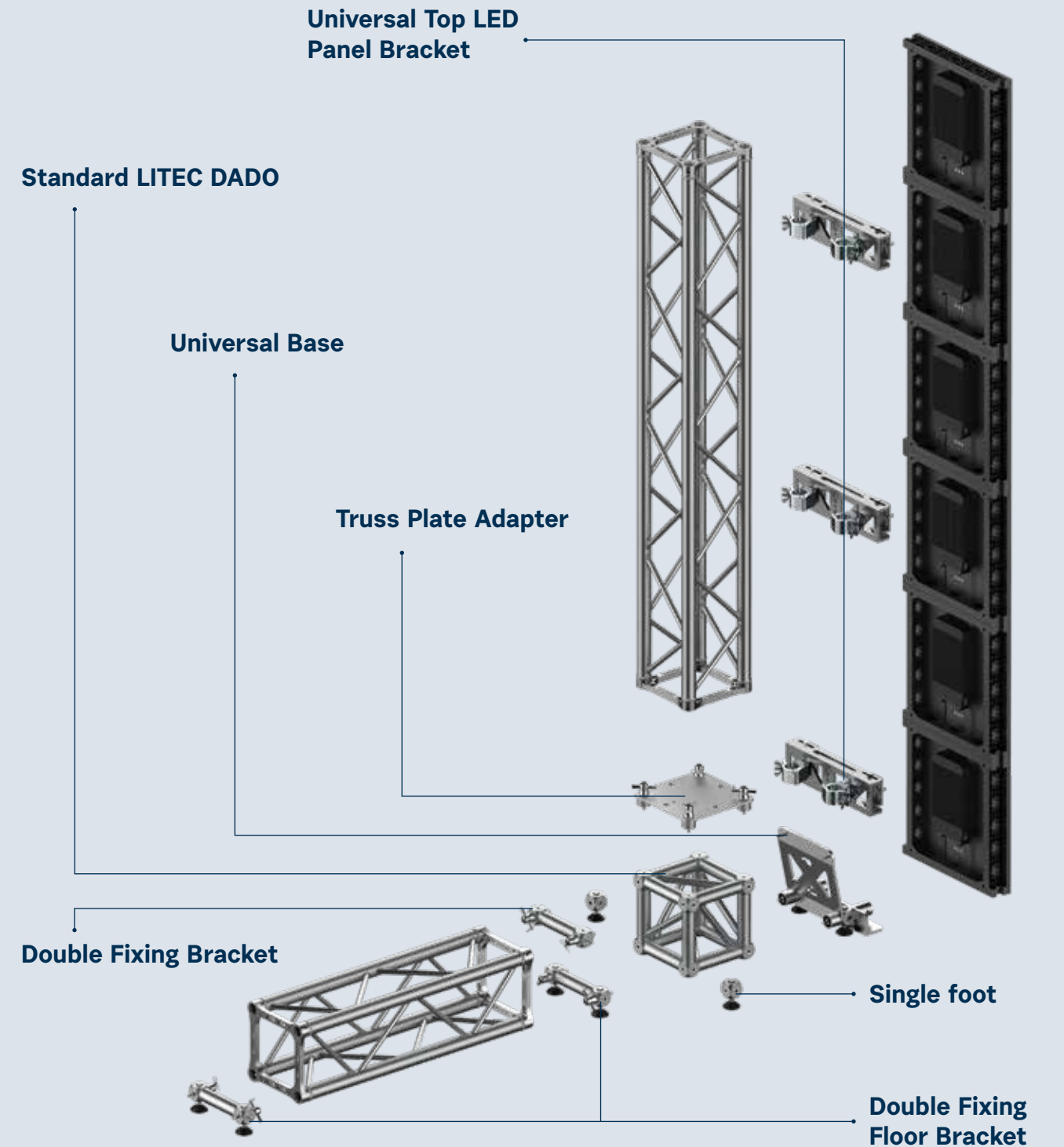
Solutions

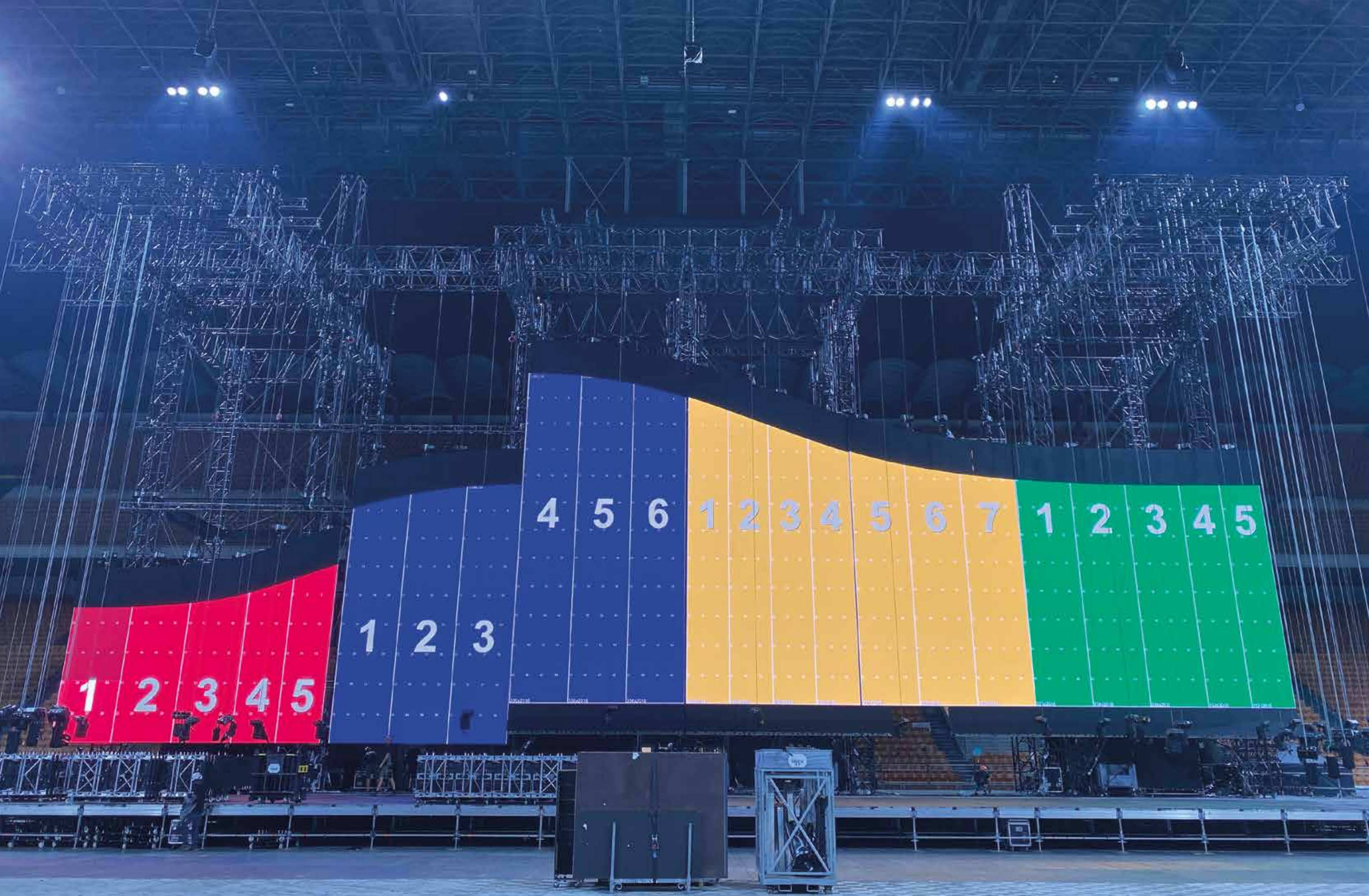
We can rely on three solutions, each differing in the type of truss used. The accessories are designed to be compatible with the vertical sections on the flat FX30SA truss, the triangular TX30SA truss, and the most common square QX30SA truss. In each solution, the ground support truss must be the QX30SA model.



Accessories

Every accessory or special piece has been designed to be compatible with the most common LITEC trusses.







Area Four Industries Italia S.r.l.

Via Martin Luther King 70, 31032
Casale sul Sile (TV), Italy

T +39 0422 997 300
F +39 0422 997 399

www.litectruss.com
www.litectruss.it

info@litectruss.com



Follow us: [@litectrussing](https://www.instagram.com/litectrussing)

